



NEWINGTON
LONDON

3 Bedrooms

Apartment

Located in London

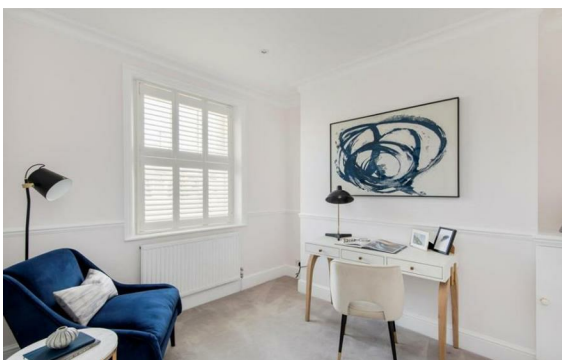
£920 Per Month



info@newingtonstates.com

<http://www.newingtonstates.com>

020 7724 2233



Situated on a picturesque tree-lined street, this beautifully refurbished three-bedroom apartment occupies the second floor of a charming period building. The accommodation features three bedrooms and three bathrooms (two en suite) alongside a spacious open-plan reception room ideal for modern living.

Perfectly positioned between Hamilton Terrace and Abbey Road, the property is within easy reach of the St John's Wood Underground Station Jubilee Line, and the boutique shops and cafés of St John's Wood High Street.

EPC rating: D

Energy Efficiency Rating: D

Agents Note: Whilst every care has been taken to prepare these particulars, they are for guidance purposes only. All measurements are approximate and are for general guidance purposes only and whilst every care has been taken to ensure their accuracy, they should not be relied upon and potential buyers/tenants are advised to recheck the measurements.

NEWINGTON LONDON

60 Upper Montagu Street

London

W1H 1SN

020 7724 2233

info@newingtonstates.com

<http://www.newingtonstates.com>